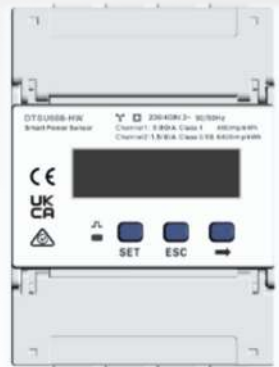


# SMART POWER SENSOR

## SmartPS-80AI-T0



DTSU666-HW



YDS60-80



DTSU71C



DHSU1079-ZT



**Accurate**  
Class I Measurement  
Accuracy



**Simple & Easy**  
LCD Display, Easy to Set  
and Check



**Energy Efficient**  
Overall Power  
Consumption  $\leq 1.5$  W

# Smart Power Sensor Technical Specifications

Technical Specification	SmartPS-80AI-T0			
	DTSU666-HW	YDS60-80	DTSU71C	DHSU1079-ZT
Manufacturer	CHINT	YADA	LINYANG	WISDOM
General Specification				
Dimensions (H x W x D)	101mm x72mm x80mm	100mm x 72mm x 80mm	101mm×72mm×80mm	100mmx72mmx80mm
Mounting type	DIN35 Rail			
Weight	0.29kg	0.285kg	0.247kg	0.40kg
Power Supply				
Power grid type	3P3W/3P4W			
Input voltage (phase voltage)	230 V AC/400 V AC			
Power consumption	<1.5W			
Measurement Range				
Line voltage	90V~1000V			
Phase voltage	176VAC~288VAC			
Current	0 ~80A			
Measurement Accuracy				
Current/Voltage	±0.5%			
Power/Energy	±1%			
Frequency	±0.01 Hz			
Communication				
Interface	RS485			
Baud rate	4800/9600 (Default) /19200/115200			
Communication protocol	Modbus-RTU			
Environment				
Operating temperature range	-25°C to +60°C	-25°C to +60°C	-25°C to +60°C	-25°C to +60°C
Storage temperature range	-40°C to +85°C	-40°C to +85°C	-35°C to +70°C	-40°C to +85°C
Operating humidity	5% RH-95% RH (non-condensing)			
Others				
Accessories	RS485 Cable (10 m / 33 ft.)			

Disclaimer: The preceding values are measured by an internal laboratory of Huawei in a specific environment. The actual values may vary with products, software versions, usage conditions, and environmental factors.